



6 St. George Wharf, Vauxhall, SW8

£3,200 Per Month

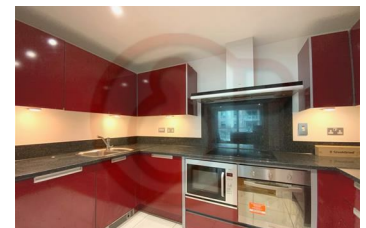
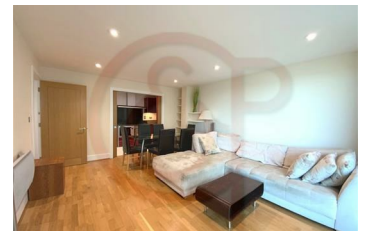
Superb two double bedroom, two bathroom apartment on the 3rd floor of Hamilton House in the award winning St George Wharf development.

The property comprises two spacious reception room, two double bedrooms, open plan kitchen and two luxury bathrooms (one en-suite).

Further benefits include video entry phone system, balcony overlooking the Thames, 24 hr concierge, on-site gym.

Transport links include Vauxhall station (Victoria Line and British Rail)

- Great views from balcony
- Two double size bedrooms
- Ample natural lights
- On-site gym
- Bright reception
- Two bathrooms
- Video entry system
- Modern fitted kitchen
- Private balcony
- 24h concierge



Energy Efficiency Rating		Environmental Impact (CO ₂) Rating	
Current	Target	Current	Target
83	78	76	76
<small>Low energy efficient - lower running costs</small> <small>High energy efficient - higher running costs</small>		<small>Low environmental impact - lower CO₂ emissions</small> <small>High environmental impact - higher CO₂ emissions</small>	
<small>Not energy efficient - higher running costs</small>		<small>Not environmentally friendly - higher CO₂ emissions</small>	
England & Wales		England & Wales	
2008/1/EC		2009/1/EC	